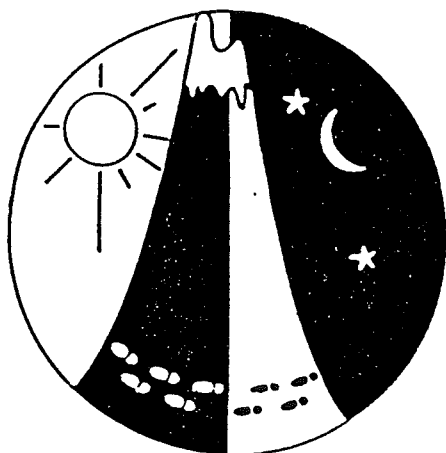


NSW ROGAINING NEWSLETTER

Number 35

September 1992



In this issue:

Cut-an'-come-again - No puddin' thieves at Manilla

World Championships - It's time!

The Search and Rescue Rogaine

Poetry with Pictures

Marsden's Musings

And coming up - the Lake Macquarie Games, Tassie's first rogaine in 10 years, and events in ACT and Queensland

SECOND SLICE FOR THE NORTHWEST ***The Plum Pudding Rogaine, Saturday 18th July 1992***

One of the first things you learn when you take on a job like running a rogaine is that you can't do everything yourself. The first event we ran was a 24 hour at Copeton Dam. We got a lot of entries at that event from members of the Gunnedah Bushwalking Club. The event stirred up a latent interest in orienteering in the club and since then they have participated in a number of orienteering events around Armidale and put on a very successful 3 hour event themselves. When we decided soon after Copeton to run another rogaine, a very early decision was to make this a Gunnedah event. As well as doing the catering we got very welcome help with flag hanging and setting up of the Hash House site from the Gunnedah members. Other vital help came from members of the Northern Tablelands Orienteering Club who did all the vetting of the course and from Anne Coggan of Armidale with the creche.



The statistics: 100 people paid to enter, 91 actually started. 28 people in the 6 hour event in 12 teams and 63 people in the 12 hour event in 26 teams. As you can see from the map, the course turned out to be much bigger than necessary. I haven't had a chance to look at who went where and I only have the flags in from the western half of the course. The intention sheets there show that nobody went to #42, 43 or 45.



The conditions were difficult, mainly because the rain made all the rocks very slippery. You just could not use them as a path since they were all covered with moss and lichen. The results would have been very different otherwise. My calculations show that there was a route which took in all the controls that was 56 km in length. At 5 km/hr average, I thought that this would not be impossible for a Ledger or Dempsey!

Our thanks to everyone who helped. We hope you all enjoyed it as much as we did and will pitch in again in two years time when we plan to run another "North West" event.

Graeme & Vicki Cooper

THE "PLUM PUDDING" ROGAINE
12 HOUR EVENT
18th July, 1992

Team	Score	Time	O	M	W	X	V	N
42 Maurice Anker, Eric Baker	720	11.36	1	1				
1 Ian Dempsey, Brad Maund, Bert van Netten	700	11.51	2	2				
21 Julian Ledger, Tony Maloney	690	11.46	3	3				
7 Nicola Plunkett-Cole, Gareth Prosser, Andrew Wizniewski	540	11.10	4			1		
16 Netta Holmes, Marnie Holmes	470	10.06	5		1			
17 Tom Cordingley, Ken Skardon	350	8.45	6	4				
26 Don Barker, Bruce Haigh, Harry Rose	350	9.08	7	5				
43 Richard McNeall, Kristin Young	350	9.43	8			2		
29 Lewis Kahn, Richard Kerr	350	10.08	9	6				
36 Sonia Kupina, Alan Mansfield	350	10.31	10			3		
35 Simon Cox, Karl Schubert	330	11.45	11	7				
2 Vince Alberts, Stephen Hamlet	320	10.59	12	8				
4 Peter Coventry, Kevin Tighe	310	8.46	13	9				
23 Wal Mills, Bill Pigram, Mark Pigram	310	11.25	14	10				
3 Richard Connors, Grant Maizels, David Palmisano, Stephen Pehm	300	8.45	15	11				
38 Rosemary Austen, Warwick Marsden	300	9.20	16			4		
18 Anthony Clark, Vaughan Clayton	290	10.37	17	12				
15 Murray Austin, Bruce Macaulay, Chris Nimmo, Marcus O'Dean	270	9.46	18					1
5 Stephen Cliffe, Lynn Morris	240	6.39	19			5		
25 Roz Atkins, Frances Martin, Gail Roland	240	11.50	20		2			
19 Narelle Clayton, David Clayton	220	9.40	21				1	
33 Peter Cosgrove, Geoff Holman	210	8.53	22	13				
34 Jacqui Bridge, Ruth Richards	190	8.40	23		3			
9 Alan Hill, John Keats	180	11.20	24				2	
22 Tony Bond, Jeni Bond, Merv English, Anne Francis	100	7.06	25			6		
8 Jennifer Borrell, Terry Funk		13.15	26		4		3	

THE "PLUM PUDDING" ROGAINE
6 HOUR EVENT
18th July, 1992

Team	Score	Time	O	M	W	X	V	N
14 Ian Carr, John Hatch, Kevin Rogers	290	6.58	1	1				
31 Elizabeth Lynch, Peter Lynch, Alan McLennan, Adam Smith	230	7.00	2			1		
13 Les Williams, Laurene Williams	190	7.12	3			2		
30 Caroline Rose, Erica Smith	180	6.20	4		1			
40 Judy Colman, Jon Lindstad	170	6.15	5					1
11 Julie Gray, Peter Gray	140	5.43	6			3		
20 Stephen Harrison, Kitty Harrison	130	6.35	7			4		
39 Jim Meek, Helen Meek	110	7.03	8			5		
24 Jack Sinden, Marly Sinden, Angelika Sinden	90	6.22	9					2
28 Mike Hanratty, Lucy Hanratty	40	3.41	10			6		
12 Lucas Georgatos, Alison Gilroy	30	4.35	11			7		
37 Ian Bailey, John Griffiths		8.07	12				1	

O - Overall

M - men

W - women

X - mixed

V - veteran

N - novice

Some thoughts from the winning team

Our overall impression was that the layout of the course was very well designed and participants would be forced to make difficult route-choice decisions, not only in the planning phase before the start, but also during the event as time began to run out.

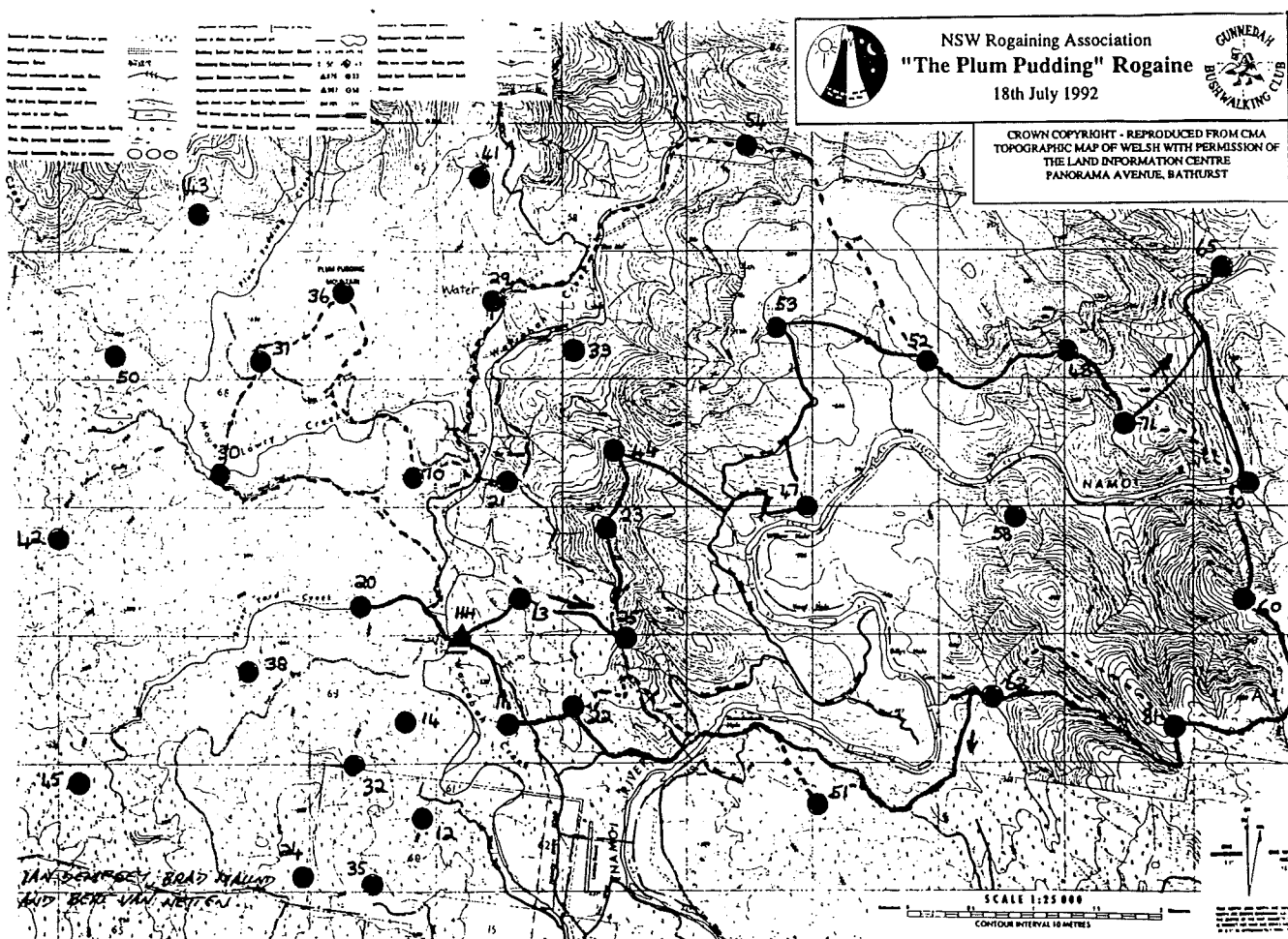
It was quite obvious from the beginning that any team with aspirations of doing well would have to tackle the high scoring points in the eastern section early and then consider how much of the western section could be covered in the time remaining. Our initial strategy was to head south of the river in an anti-clockwise direction so that by nightfall we would be in the north-east section with the option of then returning to the hash house or proceeding west into the more open country. However, we quickly decided against this as it meant that we could end up in the most difficult part of the map (around #52 & 48) at nightfall, and opted instead to proceed in a clockwise direction to end up in the more open country (!) south of the river at night. This was probably a good move, but we still found that 'open country' quite difficult to navigate in, especially as there was no moon in the early part of the evening.

Readers who study our route may wonder why we passed within 300 metres of control #51 without attempting to find it. Basically we were concerned about our physical condition after getting wet in the shower of rain half way through the evening. Our plan in fact was to complete the eastern side of the map much more quickly and return to the hash house for a feed and to pick extra clothing and lighting gear for the darker hours. So we were travelling light and this meant that Eric in particular had insufficient warm clothing to cope with the conditions.

As we got closer to home we decided to have a go at #22 if the country was not too forbidding. This we did and then onto #11, and after a pause at the hash house, a dash out to number #20 and back.

We must congratulate the organisers on their efforts in running a very challenging and enjoyable rogaine.

Maurice Anker



Team #42

—————

Maurice Anker & Eric Baker

Team #1

- - - - -

Ian Dempsey, Brad Maund, Bert van Netten

THE WORLD ROGAINING CHAMPIONSHIPS

9th-10th October, 1992

The much-publicised and debated WRCs are rapidly approaching. They loom as a significant landmark in the history of rogain. A challenging championship event that is attracting the best people in the sport. NSW will be represented by:

- | | |
|---------------------------------------------------|------------------------------------------------|
| - George Collins & Trevor Gollan | - Netta & Marnie Holmes |
| - Maurice Ripley & Peter Watterson | - Ian McKenzie & Blair Trewin (ACTRA) |
| - John & Val Hodsdon | - Sue Clarke & Tony Maloney |
| - Julian Ledger & Stephen Keenlyside | - Ian Dempsey & Andy Blakers (ACTRA) |
| - Simon George & Joanna Parr | - Jennifer Borrell & Terry Funk |
| - Frank & Jenny Anderson | - Robyn Tuft & Meg Thornton |
| - Sharon Gardner & David Robertson | - Ron Hutchings & Mike Hotchkis |
| - Alan Mansfield & Sonia Kupina | - Cameron Osborne & Mike Billinghamurst |
| - Chris Rehberg & Rebecca Webb | - Karl Schubert, Michael Nelson & Stuart Inman |
| - Bert & Dianne Van Netten & Phil Creaser (ACTRA) | |

The debates associated with quotas proved somewhat futile in that the limits were abandoned by the WRC committee when overseas and non-Victorian entries fell short of expectations. The 37 NSW people listed above represents nearly all of the top competitors in the NSWRA, especially over the 24-hour distance. We offer them our best wishes.

According to the WRC Information booklet, "the course is intended to challenge, even intimidate you. To do well you will have to take risks, but know your capability right from the start. The course is huge: it took a year to course set and months to vet. However, it is probably not as physically demanding as you might be expecting."

The South Australians are running regular training sessions prior to the WRCs, an indication of the seriousness of the competition. From the NSW viewpoint, the September 12-hour, just two weeks beforehand, must be the ideal way of testing/improving your skills and stamina. It may be interesting to see how the World Champs aspirants succeed at Newcastle.

There has been expressions of interest from overseas people for entry to the Newcastle event prior to travelling to Victoria in October. No specific requests have been received but it would be useful if we had a few billets to offer our visitors. Give me a call (042 85 4053) if you can offer hospitality, especially if you are going to Newcastle and can provide transport to/from the event.

Trevor Gollan

And it's not too late to be part of history!

You can enter the 1st World Rogaining Champs NOW! All entries received to date have been accepted and there are a number of places still available to be filled on a 'first in' basis. Don't be deceived or frightened off by the advertised elite nature of this event. At the end of the day, it's still a 24 hour rogain with the same basic elements and challenges as a normal NSWRA event. Just don't expect 60 pointers on knolls within a kilometre of the Hash House. If you'd like to participate in and experience an international event being run to the highest standards than call Bob or Lesley Northey on 03 528 6767.

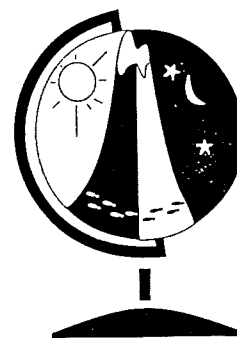
For the supporters, drivers and those who just want to be there

The WRC Committee is restricting access to the Hash House to competitors, officials, helpers and visitor's wearing colour coded plastic bracelets. Visitor passes entitle the wearer to a copy of the WRC map (available after the event), meals at the Hash House (Friday dinner to Sunday lunch inclusive) and entry to the Bush Dance on Saturday night (they'll be the only ones with enough energy to rage!)

These passes are available by sending \$18 (cheques payable to World Rogaining Championships) to

Jenny McInnes, 13 Fairchild St, Abbotsford Vic 3067 (03 428 4320).

For non-members of a rogain association the fee is \$20. Passes will be available for pickup at the Event Control Centre after 1100 hours on Friday 9th October 1992.



NAVIGATE 92 - The Search and Rescue Rogaine

27th-28th June, 1992

The S&R Rogaine provides the opportunity for rogainers to compare their skills with bushwalkers, emergency service organisations and the like. In this article, two of our members give their impressions of this year's event.

On the weekend of 27th and 28th of June, I took part in the 1992 Wilderness Navigation Shield as part of a team from the Wollongong City State Emergency Service. The event is an annual one organised by the Bushwalkers Search and Rescue group. It aims to provide an opportunity for teams to practise and assess their wilderness navigation and bush skills. It attracts teams from both professional and volunteer emergency service organisations, the armed services, bushwalking clubs and our own Rogaining association. In all, over 50 teams participated in this year's event.

The weekend provided both a one day (11 hour) and two day (29 hour) event. The course, which was held in the rugged Nattai area, was made even more challenging by the abysmal weather conditions - rain, rain and more rain. The controls ranged in value between 2 and 6 points. The only 6 point control we got was our last control and it was certainly worth at least the 6 points.

The winning team, which gets to keep the Navigation Shield, was a group of Outdoor education instructors from Scots College. They managed to score 74 points. As usual the bushwalking clubs did well taking out the next 6 placings with our team coming 7th and winning the SES class. Next year's event will be held on the last weekend in June somewhere in the Blue Mountains.

Stephen Cliffe.

And what are the differences?

NAVIGATE 92 was "sort of" a rogaïne but with enough differences to make it stand out from the usual NSWRA events. We'd chosen the 11 hour rogaïne section and as the event was just off the expressway near Mittagong we opted to stay at the pub a little longer on Friday night rather than camp; there was always Saturday night for that. Unfortunately our relaxed attitude spilled over into Saturday and so Rosemary, Doug and I arrived only about half an hour before the extremely uncivilised 8.30 am start (*difference #1*) to find that we had to mark our own maps (*difference #2 - have we done ourselves a disservice by going almost exclusively to premarked maps?*)

Peter Wherry had organised a rogaïne at Hilltop in 1986 (?) and so when I spotted him I asked if this event was using the same area. "No mate, this is all the stuff that I thought was too dangerous!" (*difference #3 - S&R looks for rough terrain to make sure the serious Navigation Shield contenders earn their trophy!*)

We managed to get sufficiently organised to be only about 20 minutes behind the rest; just long enough to have to navigate to our first checkpoint rather than use that wonderful navigation aid: follow the pack. We'd decided early on that we were there to see the superb Nattai Wilderness rather than blitz the course (unaware that the course would have made the same decision on our behalf) and so we headed down into Martins Creek for our first three checkpoints (#57, #48 and #40) with its ti-tree swamps, cliffl/mossy sides and wonderfully varied vegetation. Light rain fell steadily for the first couple of hours (*difference #4 - it hasn't rained for over a year on a NSWRA event, snow notwithstanding*) making the scenery even more beautiful. Up and over a ridge and down into another creek system for #41 and #60.

While enjoying ourselves we realised that we weren't going as fast as we needed to get into and out of the Nattai River (400 metres down and up). So we opted for a road bash to a group of checkpoints overlooking the spectacular Rocky Waterholes Creek. The road gave way to a very well defined trail (WDT) which we left to get #63, and returned to a little later. Every rogaïne worth their salt knows that a WDT or road always spells disaster! The WDT was just that until it simply petered out. We backtracked but still ended up at the same spot. We decided that we must be close to the headland and so pressed on: there it is - the flag! Hold on, not the flag but a flag, #KO(R). In my years of rogaïning I've never had the ignominy of stumbling onto a checkpoint. We briefly discussed whether we really ought to punch it - a very brief discussion! At least we knew where we were and had no trouble cutting across to the WDT (which had deviated behind a fallen log a long way back) and onto Radio Control #4 (*difference #5 - personned controls with cheerful people and a wonderful fire to greet you*) with its spectacular views to the south. Our navigation had deteriorated with the weather which was now cold and wet. We managed to blunder our way to #KO(1) right on dark and then commenced the long trek along the WDT to the Hash House with the rain getting heavier.

Luckily the rain eased a short time after our return and we were able to enjoy the campfire for a while although it was *difference #6* that probably caused us to abandon our plans to camp and head for home. Full catering is not part of the organisation with the only food available being sausage sangers, soft drinks and beer, and we were too tired to prepare our own. But that didn't detract from what was a challenging and immensely enjoyable rogaine in some of the finest country that NSW has on offer. Well done to John Tonitto, Bob Cavill and the rest of the S&R team. I'll be at next year's event up near Bell and I'll bring the NSWRA caterers with me!

Warwick Marsden

IMAGES AND REFLECTIONS

For those who do not know,
Nor feel the urge or wish to go,
Not know the champagne cork at ten,
Or know the scramble that follows then,
Or know the climb for 100 points
Or blistered feet and aching joints,
To find controls in ghost gum boughs,
Nor wish for it nor want to know.



Nor what it's like to walk all night,
Through paddock, forest, 'neath full moonlight,
Or search in vain for half an hour,
Or get soaked in a midnight shower.
For we are queer who wish to go,
Or so they say who do not know.

Nor what it's like plotting course at night,
With topo, compass and lack of sight,
Or live for just a taste of beer,
Or hashburger when end is near,
Or enjoy so much to stop and rest,
And know at least it's been your best.
For we are crazy, us who go,
Or so they say who do not know.



Editorial - WARWICK'S WISDOM

The fun can be getting there and back!

We didn't get enough starters to make it possible to hire a bus to go to the Tamworth event (but we'll try again). However, Graeme Cooper did a great job in arranging for several teams to get lifts. The laughter emanating from Tony Maloney's car as he arrived with his partner Julian Ledger and two previous strangers, Terry Funk and Jennifer Borrell, reminded me of how much fun can be had giving lifts to other teams. A couple of my favourite rogaining stories (Mick Finn and his 48 leeches at Tallanganda and an epic trip to the Kiandra rogaine in which my passengers were left on the side of the road) are at the expense of people I've given or shared lifts with.

Rogainers are on the whole a pretty good bunch of people and sharing lifts is a great way to get to know them better. It also adds an element of safety if a less competitive team does the driving, helps the journey seem shorter (even when your passengers opt for a 4 course a la carte meal instead of hamburgers) and is environmentally responsible. And of course if you're a passenger, remember that petrol is the least contribution you can make as there is often a lot of wear and tear on a car as well. En route munchies and a post event "stop" may also be good ways of showing your appreciation. Students and those without regular work can contribute according to their means. And who knows, you might even poach or meet that "perfect partner"!

Events, Sections and Classes

The Wuuluman rogaine even had the organisers a shade confused when it came to the various divisions so here's a definitive look at those groupings which may be on offer at a rogaine.

Event: This refers to the time allowed. At NSW rogaines there are mainly 12 hour and 24 hour events. The 24 hour events will almost always have an 8 hour event on offer and perhaps a 16 hour, while 12 hour events are usually combined with a 6 hour event. The Paddy Pallin is a single 6 hour event.

The 24 hour event is regarded as the championship event although at Wuuluman we acknowledged that if a team in the 16 hour event got more points than a team in the 24 hour event then they should be regarded as champions; i.e. there is an overall score which is independent of the length of the event.

Sections: There are a number of sections which may be offered at events:

Open - all entrants are automatically included in this section

Veterans - all team members over 40 years of age on the day of the event

Super Vets - all team members over 55 years of age

Juniors - all team members between 14 and 18 years of age

Novices - this is the first event for all team members

Scouts - all team members are current members of a Scout or Guide Association

Family - all team members belong to the same nuclear family with at least two generations.

Teams may qualify for consideration in more than one section, e.g. a husband and wife who are both over 55 and are Scout leaders, and who have never tried rogaining would qualify for the open, veterans, super vets, novices and scouts sections if we were crazy enough to offer them all.

Classes: At a rogaine such as Wuuluman where there were three events, four sections and three classes there were theoretically $3 \times 4 \times 3 = 36$ separate categories. Clearly this can, and has, lead to confusion so by convention there must be at least three teams in a category for that category to be constituted.

Whew! We haven't managed to entirely sort things out this year but next year the confusion will be yours!

John Makinson

Those of us who attended this year's Paddy Pallin Rogaine will be saddened to learn of the death of John Makinson, the owner of the property which provided the assembly area for the event and access to the wonderful course. John, and his wife Phyl, not only made their property available but provided considerable assistance and hospitality to the course setters and organisers. On behalf of the NSWRA I'd like to extend our sympathies to Phyl Makinson, Robyn and Rodger Austen, Marie and Eric Metzke and their families.

Warwick Marsden

STILL PLENTY TO COME IN 1992

The Lake Macquarie Rogaine, 19th September 1992

Bert and Ian have really worked hard to make this event even more prestigious than the World Championships. With the support of the local council, the rogaïne will be part of the Lake Macquarie Games. The event has been advertised widely and hopefully a number of teams will use this opportunity to 'sharpen their skills' before the WRC. Located in the Sugarloaf Ranges, west of Lake Macquarie, it is just off the end of the expressway from Sydney. The course is not just for the elite and there will be plenty of interest for novices, families and those who just want to take it easy! Childminding will be available. Entry forms were included in the last newsletter and there's another one enclosed.

The Tasmanian Tiger Search Rogaine, 7th-8th November 1992

For those who may be looking for an excuse to head down south and across Bass Strait, Orienteering Tasmania and the Esk Valley Orienteering Club are organising the second rogaïne ever to be held in that state. The first one was more than 10 years ago in January 1982. It's been a long time between drinks for the Taswegians so this might be your only chance for 'offshore' rogaïning. The event (24 hour) will be held in the Tasmanian Highlands in the Bronte Area. A mixture of open farm land, big marshes with tussock grass, open to dense forest and rolling to steep hills with magnificent views are promised. You can guarantee that it will be different than anything the NSWRA can offer! Information and entry forms can be obtained from Paul Pacque, 28 Arundel St, Launceston 7250 (003 43 3367). Entries close 15th October 1992.

Closer to home - Queensland and the ACT, 7th November 1992

If you can't make it to Tasmania for the first weekend in November then you have a choice between two 12 hour events. One in south eastern Queensland, the other in the hills one hour's drive south of Canberra. Unfortunately we don't have details as we go to press but information can be obtained on the Queensland event from Eric Andrews (07 268 3388). The ACT event will be held on the course they planned to use for their championships in May but which was in an area embargoed by the ACT Orienteering Association. There will be a mix of rugged bushland, pine forests, outstanding views and rock outcrops - much above 1000 m. Those who remember the Namadgi Rogaine in 1989 will know that it will be well worth the trip. Enquiries to Ken Anderson (home - 06 286 2073, work - 06 243 0300).

ENJOY THE CHALLENGE OF YOUR NEXT ROGAÏNE

Services

Surveying: Control surveys for natural resource and construction projects, Global Positioning System surveys and services. Project management, geodetic and mapping control surveys as well as survey control information.

Graphics: Design, planning, layout and proofing, electronic publishing (Macintosh and IBM), image scanning, camera contacts, dyelines, printing, bookbinding, planmounting and framing services are all provided for in-house and contract work.

Scanning and Digitising: collection of digital information from source data. Production of working copies from original documents.

Aerial Photography: State-wide Photographic coverage, photomosaics and special purpose aerial photography.

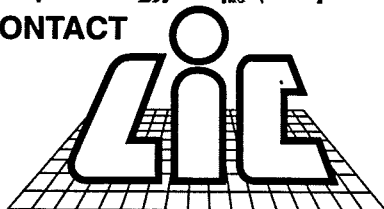
Thematic Mapping: Thematic maps for any purpose using the Centre's base mapping or Client-supplied base.

Image Processing: Digital image processing analysis, Landsat sales.

Information Systems: Advisory services in information management and systems development.



CONTACT



LAND INFORMATION CENTRE
DEPARTMENT OF CONSERVATION
AND LAND MANAGEMENT

PANORAMA AVENUE
BATHURST NSW 2795
TELEPHONE 063 328 200
FAX 063 318 095

Products

- *Digital cadastral information for NSW
- *Digitally derived cadastral map products
- *Aerial photography coverage of NSW
- *Topographic maps covering NSW
- *Parish and county maps covering NSW
- *Orthophoto maps
- *Property maps
- *Touring maps
- *Tourist maps
- *Historic map reproductions
- *Geographic names gazetteer
- *NSW display map
- *Special publication including:
 - Official Road Directory of NSW
 - Map Reading Guide
 - Atlas of NSW
- *Special use maps including:
 - NSW base maps
 - Aboriginal map of NSW
 - Lord Howe Island Colour Photomap
 - NSW Local Government Areas map
 - Sydney CBD colour photomap
- *Survey information covering NSW

What's planned for 1993?

The provisional 1993 calendar is listed below. There are a few innovations including a 6 hour "Come and Try It" event early in the year, two 24 hour events and the Paddy Pallin event spread over two days. However, when looking at who's doing what, there are LOTS of empty spaces! This gives you an opportunity to experience the delights of being involved in the organisation of a rogaine. So, when you decide how you might help, give Trevor Gollan a call on (042) 85 4053 or drop him a line at:

39 Greenslopes Avenue, Mount Ousley NSW 2519.

Event Date	6 hr CATI March 7	Autumn 24 hr April 10-11	Paddy Pallin July 10-11	NSW Champs August 28-29	Spring 12 hr October 30
Location			Blue Mountains		
Coordinator			Warwick Marsden	Trevor Gollan	Bankstown Bushwalkers
Course Setter		Tony Maloney	John Barnes <i>et al</i>	Peter Watterson	Bankstown Bushwalkers
Administration			Julian Ledger	Sonia Kupina	
Childminding					
Catering	John Keats				Bankstown Bushwalkers

Note: S&R Rogaine, Bell, June 26-27

NSWRA Committee 1992/1993

President	Alan Mansfield	4/68 St Thomas St, Clovelly 2031	02 665 4925
Secretary	Trevor Gollan	39 Greenslopes Ave, Mt Ousley 2519	042 85 4053
Treasurer	Tony Maloney	560 Mowbray Rd, Lane Cove 2066	02 428 2001
Editors	George Collins	20 Viburnum Rd, Loftus 2232	02 521 4342
	Warwick Marsden	35 Grose Rd, Faulconbridge 2776	047 51 1892
Publicity	Julian Ledger	108 Cressy Rd, East Ryde 2112	02 888 1954
ARA Rep.	Ian Dempsey	138 Tirriki St, Charlestown 2290	049 43 5790
Committee	Graeme Cooper	Cluny Rd MSF2005, Armidale 2350	067 72 3584
	Anne Francis	62A Delmar Pde, Dee Why 2099	02 982 4836
	John Keats	109 Mississippi Rd, Seven Hills 2147	02 636 2364
	Sonia Kupina	4/68 St Thomas St, Clovelly 2031	02 665 4925
	David Sigley	7 Keith St, Peakhurst 2210	02 53 9937
	Peter Watterson	13 Driver St, Denistone 2114	02 804 6091

This Newsletter is produced by the NSW Rogaining Association and printed by the University of Wollongong Printery. The poem on p6 was written by I.M.Groves and first appeared in the WARA Newsletter. Contributions are always welcome and should be sent to 20 Viburnum Road, Loftus NSW 2232. Wordprocessor text files on diskette will save us retyping your article. Both IBM and Macintosh formats are acceptable. Alternatively, you could try electronic mail to gcz@nucleus.ansto.gov.au.

If the name and/or address on the label is incorrect, please fill in this form and return to
Trevor Gollan, 39 Greenslopes Ave, MOUNT OUSLEY NSW 2519

Name: _____

Address: _____

Old Address: _____

PLEASE DO NOT TEAR THE WRAPPER!

Registered by Australia Post:
Publication No. NBH 7617

If undeliverable return to
NSW Rogaining Association
39 Greenslopes Ave
Mt Ousley NSW 2519

SURFACE
MAIL

POSTAGE
PAID
AUSTRALIA